

# .118"(3.00mm) pitch Wire to Board Power Connectors



## W3015XP Series

- \* Poles: 2-12
- \* Material: Insulator: PA9T or HTN or LCP BLACK
- \* Contact: 0.64mm Square Pin, Brass Tin plated
- \* Mates with CH3025S-XX series Housing

### Specifications

- \* Current rating: 5A AC, DC
- \* Voltage rating: 250V AC, DC
- \* Temperature range: -40°C~+105°C
- \* Insulation resistance: 1,000MΩ min.
- \* Withstand voltage: 1500V AC/minute

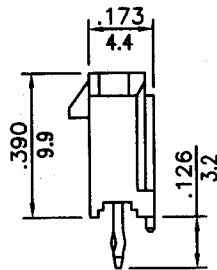
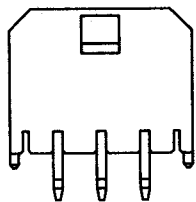
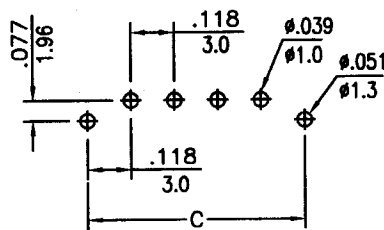
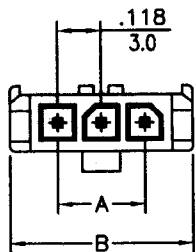
### ORDERING CODE

W3015XP-05 T  
1 2 3

1. SERIES NO.
2. NO. OF CIRCUIT: 2~12
3. CONTACT PLATED:  
T=TIN OVER NICKEL

P/N: W3015SP-XXT

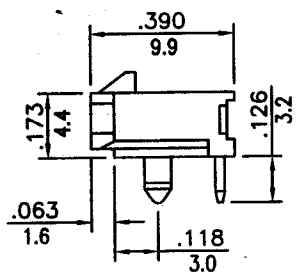
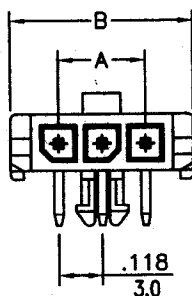
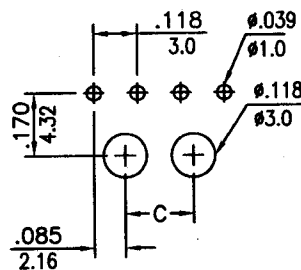
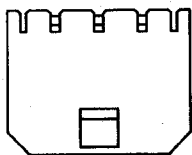
P.C.B LAYOUT



CKTS	DIM. "A"	DIM. "B"	DIM. "C"
2	(.118)3.00	(0.380)9.65	(0.354)9.0
3	(0.236)6.00	(0.498)12.65	(0.472)12.0
4	(0.354)9.00	(0.616)15.65	(0.591)15.0
5	(0.472)12.00	(0.734)18.65	(0.709)18.0
6	(0.591)15.00	(0.852)21.65	(0.827)21.0
7	(0.709)18.00	(0.970)24.65	(0.945)24.0
8	(0.827)21.00	(1.089)27.65	(1.063)27.0
9	(0.945)24.00	(1.207)30.65	(1.181)30.0
10	(1.063)27.00	(1.325)33.65	(1.299)33.0
11	(1.181)30.00	(1.443)36.65	(1.417)36.0
12	(1.299)33.00	(1.561)39.65	(1.535)39.0

P/N: W3015RP-XXT

P.C.B LAYOUT



CKTS	DIM. "A"	DIM. "B"	DIM. "C"
2	(.118)3.00	(0.380)9.65	
3	(0.236)6.00	(0.498)12.65	
4	(0.354)9.00	(0.616)15.65	(0.185)4.7
5	(0.472)12.00	(0.734)18.65	(0.303)7.7
6	(0.591)15.00	(0.852)21.65	(0.421)10.7
7	(0.709)18.00	(0.970)24.65	(0.539)13.7
8	(0.827)21.00	(1.089)27.65	(0.657)16.7
9	(0.945)24.00	(1.207)30.65	(0.776)19.7
10	(1.063)27.00	(1.325)33.65	(0.894)22.7
11	(1.181)30.00	(1.443)36.65	(1.012)25.7
12	(1.299)33.00	(1.561)39.65	(1.130)28.7