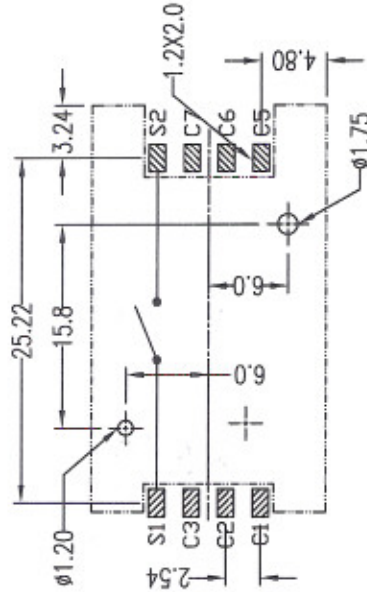
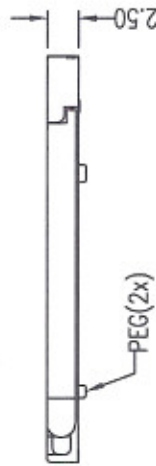
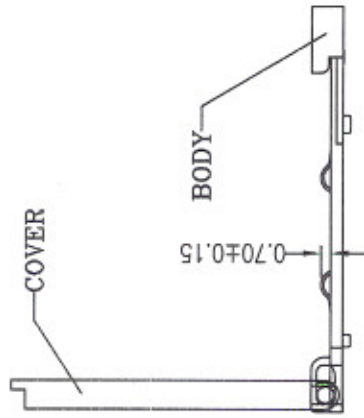
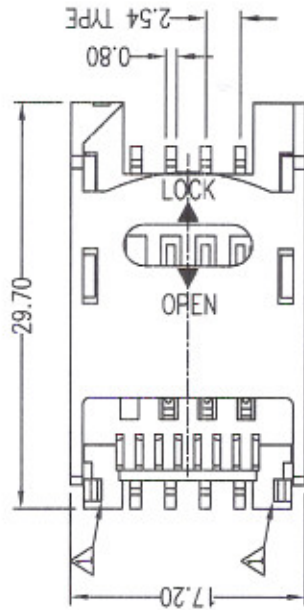


***Specification:**

1. Housing: Thermoplastic UL 94V-0, Color: Black;
2. Contact: Phosphor Bronze;
3. Contact Plating: Gold Plating Over Nickel on Contact Area, Tin/Lead Plating on Solder Tail
4. Current Rating: 0.5 AMP. Max.;
5. Dielectric Withstanding Voltage: 500V AC R.M.S For One Minute;
6. Insulation Resistance: 1000 M Ohms Min. AT DC 500V
7. Contact Resistance: 50 M Ohms Max.;
8. Operating Temperature: -25°C to +85°C;
9. Processing Temp: 260°C for 15 Seconds Max.;



RECOMMEND P.C.B. LAYOUT
TOP VIEW

ORDER INFORMATION

SIM40-06 SA 0 R S
1 2 3 4 5 6

1. SERIES NO
2. NO. OF POS
3. CONTACT PLATED
SA=SELECTIVE GOLD FLASH
4. POST OPTION
0=W/O LOCATING PEG
1=W/LOCATING PEG
5. PACKING
R=TAPE&REEL
6. With Switch

詮盛企業股份有限公司 CHIEN SHERN ENTERPRISE CO.,LTD.	TITLE	SIM CARD CONN WITH COVER	GENERAL TOLERANCE	DRAWN	許建華	DATE	2005.11.02
	PART NO.	SIM40-06SA0RS	DIM: X: ±0.5 X.X: ±0.25 X.XX: ±0.2 X.XXX: ±0.08	CHECK		DATE	
	DWG.NO.	SIM40-06SA0RS		APPROVE		DATE	
				SCALE	1:1	UNIT	mm
						REV.	01