

# .098"(2.50mm) pitch Wire to Wire Connectors

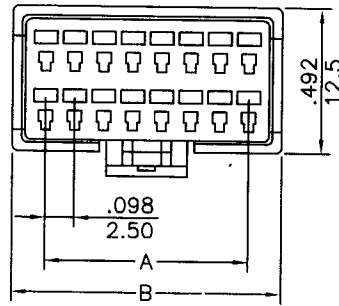


## H6504 Series

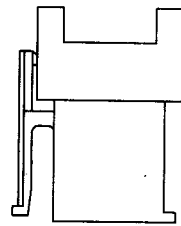
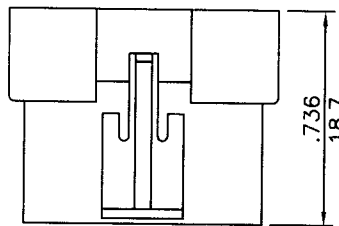
- \* Poles: 2x6, 2x7, 2x8, 2x9
- \* Material: NYLON 66 UL 94V-2
- \* Suitable T6504T series terminal
- \* Mates with H6503-2xXX series

### Specifications

- \* Current rating: 3A AC, DC
- \* Voltage rating: 250V AC, DC
- \* Temperature range: -25°C ~ +85°C
- \* Insulation resistance: 500MΩ min.
- \* Withstand voltage: 1,000V AC/minute



inches  
mm



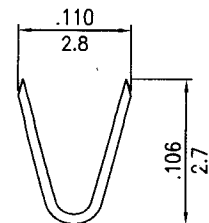
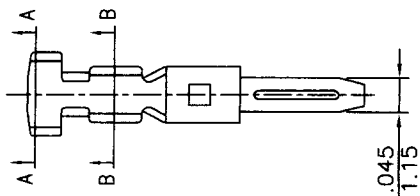
CIRCUITS	PART NO.	DIMENSION in.(mm)	
		A	B
12	H6504-2x6	0.492(12.50)	0.720(18.3)
14	H6504-2x7	0.590(15.00)	0.819(20.8)
16	H6504-2x8	0.689(17.50)	0.520(13.2)
18	H6504-2x9	0.787(20.00)	1.012(25.7)

# .098"(2.50mm) pitch male crimp terminal

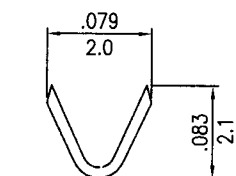
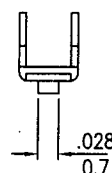
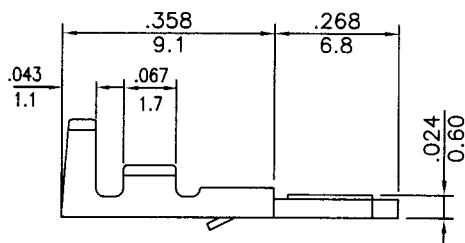
## T6504T Series

- \* Material: Brass
- \* Finished: Tin-plated
- \* Used in H6504 series housings
- \* Wire range: AWG#22~#28
- \* Insulation O.D: 1.2~1.8mm
- \* Thickness: 0.2mm
- \* Q'TY: 7,000pcs/reel

inches  
mm



A-A SECTION



B-B SECTION