

.098"(2.50mm) pitch Wire to Wire Connectors

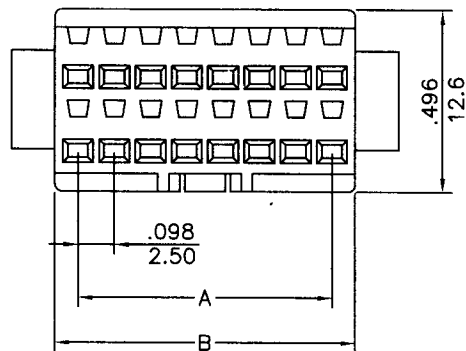


H6503 Series

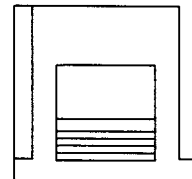
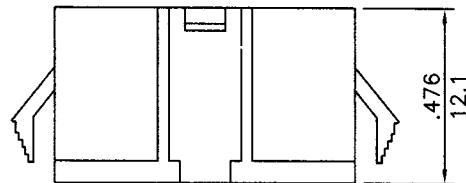
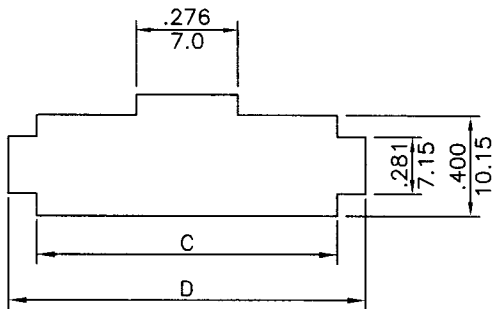
- * Poles: 2x6, 2x7, 2x8, 2x9
- * Material: NYLON 66 UL 94V-2
- * Suitable T6503T series terminal
- * Mates with H6504-2xXX series H.S.G.

Specifications

- * Current rating: 3A AC, DC
- * Voltage rating: 250V AC, DC
- * Temperature range: -25° C ~ +85° C
- * Insulation resistance: 500MΩ min.
- * Withstand voltage: 1,000V AC/minute



inches
mm



panel hole dimensions

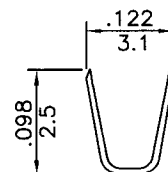
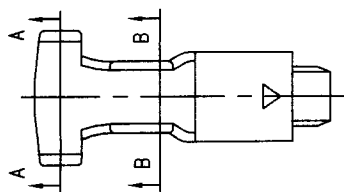
CIRCUITS	PART NO.	DIMENSION in.(mm)			
		A	B	C	D
12	H6503-2x6	0.492(12.50)	0.618(15.7)	0.622(15.8)	0.776(19.7)
14	H6503-2x7	0.590(15.00)	0.716(18.2)	0.720(18.3)	0.874(22.2)
16	H6503-2x8	0.689(17.50)	0.819(20.8)	0.823(20.9)	0.976(24.8)
18	H6503-2x9	0.787(20.00)	0.917(23.3)	0.921(23.4)	1.075(27.3)

.098"(2.50mm) pitch female crimp terminal

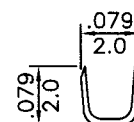
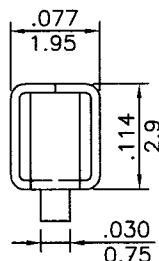
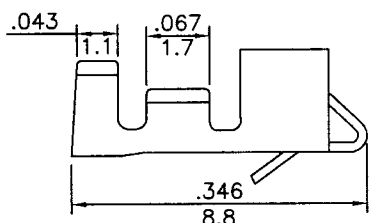
T6503T Series

- * Material: Brass
- * Finished: Tin-plated
- * Used in H6503-2xXX series housings
- * Wire range: AWG#22~#28
- * Insulation O.D: 1.2~1.8mm
- * Thickness: 0.2mm
- * Q'TY: 7,000pcs/reel

inches
mm



A-A SECTION



B-B SECTION