

# .156"(3.96mm) pitch single row pin headers

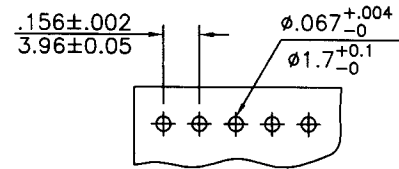


## CW393 Series

- \* Poles:2-20
- \* Material:Insulator:NYLON66 UL94V-2
- \* Contact:1.14mm(.045") square pin,brass,tin plated
- \* Mates with CH393 series housing

## Specifications

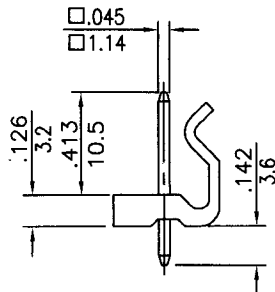
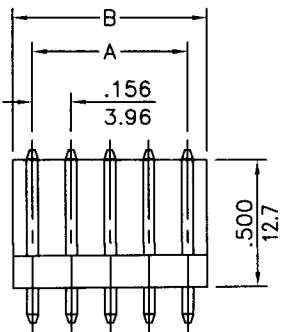
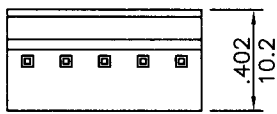
- \* Current rating: 5A AC, DC
- \* Voltage rating: 250V AC, DC
- \* Temperature range: -25°C~+85°C
- \* Insulation resistance: 1,000MΩ min.
- \* Withstand voltage: 1500V AC/minute
- \* Applicable PC board thickness: .063" (1.6mm)



P.C. Board Layout

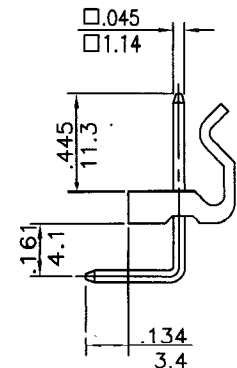
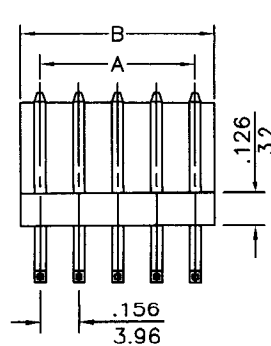
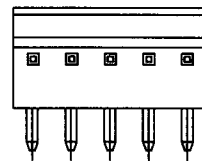
## P/N:CW393S-XX

Straight Angle

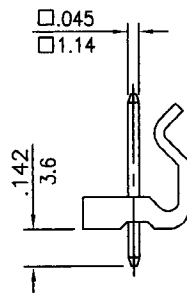
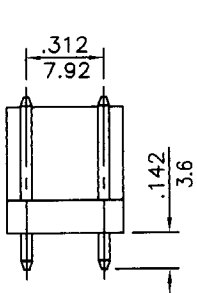
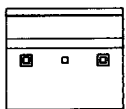


## P/N:CW393R-XX

Right Angle



## P/N:CW393S-03K2



CIRCUITS	PART NO.	DIMENSION in.(mm)		CIRCUITS	PART NO.	DIMENSION in.(mm)	
		A	B			A	B
2	CW393X-02	0.156(3.96)	0.312(7.92)	12	CW393X-12	1.715(43.56)	1.871(47.52)
3	CW393X-03	0.312(7.92)	0.468(11.88)	13	CW393X-13	1.871(47.52)	2.027(51.48)
4	CW393X-04	0.468(11.88)	0.624(15.84)	14	CW393X-14	2.027(51.48)	2.183(55.44)
5	CW393X-05	0.624(15.84)	0.780(19.80)	15	CW393X-15	2.183(55.44)	2.339(59.40)
6	CW393X-06	0.780(19.80)	0.935(23.76)	16	CW393X-16	2.339(59.40)	2.494(63.36)
7	CW393X-07	0.935(23.76)	1.091(27.72)	17	CW393X-17	2.494(63.36)	2.650(67.32)
8	CW393X-08	1.091(27.72)	1.247(31.68)	18	CW393X-18	2.650(67.32)	2.806(71.28)
9	CW393X-09	1.247(31.68)	1.403(35.64)	19	CW393X-19	2.806(71.28)	2.962(75.24)
10	CW393X-10	1.403(35.64)	1.559(39.60)	20	CW393X-20	2.962(75.24)	3.118(79.20)
11	CW393X-11	1.559(39.60)	1.715(43.56)				