

.165"(4.20mm) pitch Power connectors

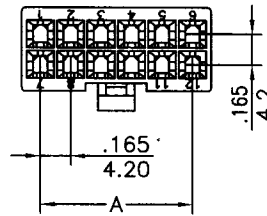


CH4201 Series

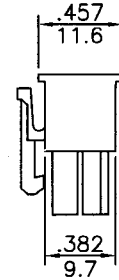
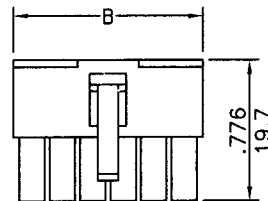
- * Poles:2-24
- * Material:NYLON 66 UL94V-2
- * Suitable CT4201 series terminal
- * Mates with CH4202 series Housing, CW4201S, CW4201R series header

Specifications

- * Current rating: 8A AC, DC
- * Voltage rating: 500V AC, DC
- * Temperature range: -25°C~+105°C
- * Insulation resistance: 1,000MΩ min.
- * Withstand voltage: 1,500V AC/minute



inches
mm

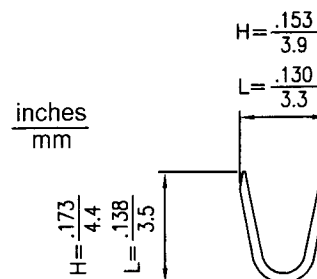
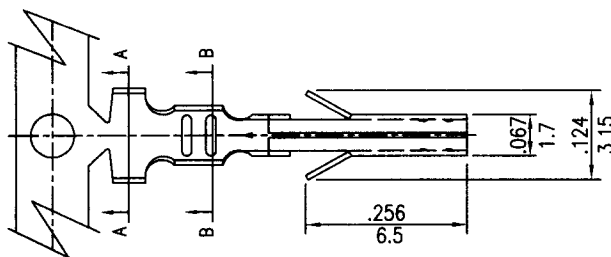


CIRCUITS	PART NO.	DIMENSION in.(mm)		CIRCUITS	PART NO.	DIMENSION in.(mm)	
		A	B			A	B
2	CH4201-2X1		0.217(5.5)	14	CH4201-2X7	0.992(25.20)	1.209(30.7)
4	CH4201-2X2	0.165(4.20)	0.382(9.7)	16	CH4201-2X8	1.157(29.40)	1.374(34.9)
6	CH4201-2X3	0.331(8.40)	0.547(13.9)	18	CH4201-2X9	1.323(33.60)	1.539(39.1)
8	CH4201-2X4	0.496(12.60)	0.713(18.1)	20	CH4201-2X10	1.488(37.80)	1.705(43.3)
10	CH4201-2X5	0.661(16.80)	0.878(22.3)	22	CH4201-2X11	1.654(42.00)	1.870(47.5)
12	CH4201-2X6	0.837(21.00)	1.043(26.5)	24	CH4201-2X12	1.819(46.20)	2.035(51.7)

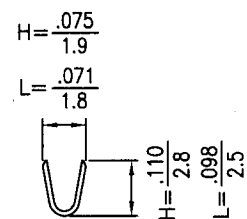
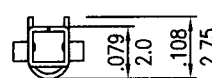
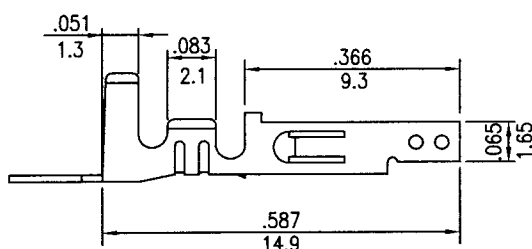
.165"(4.20mm) pitch crimp terminal

CT4201 Series

- * Material:Brass
- * Finished:Tin-plated
- * Used in CH4201,CH4204,CH4257 series housings
- * Wire Range:CT4201T:AWG#18~22
CT4201HT:AWG#16~18
- * Insulation O.D:2.80mm(max)
- * Thickness:0.20mm
- * Q'TY:5,000pcs/reel



A-A SECTION



B-B SECTION