

.100"(2.54mm) pitch Wire to Board Connectors



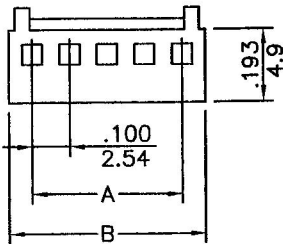
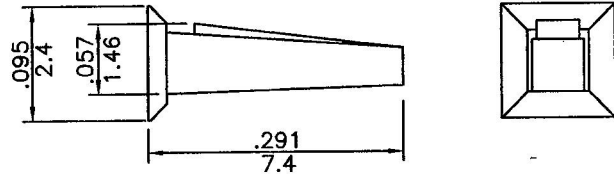
CH251Z Series

- * Poles:2-12
 - * Material:NYLON 66 UL 94V-2
 - Color: White or Henna
 - * Suitable CT251T terminal
 - * Mates with CW2546 series wafer
- Specifications
- * Current rating: 3A AC, DC
 - * Voltage rating: 250V AC, DC
 - * Temperature range: -25°C~+85°C
 - * Insulation resistance: 1,000MΩ min.
 - * Withstand voltage: 1,000V AC/minute

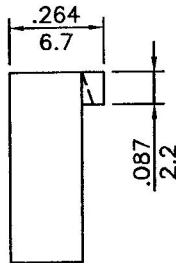
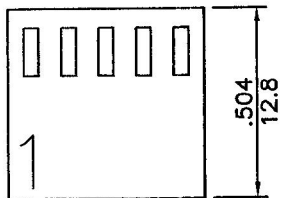
- * Housing polarizing key
- * Material:NYLON66 UL 94V-2
- * Used in CH251 series housings

inches
mm

P/N: CK251



inches
mm



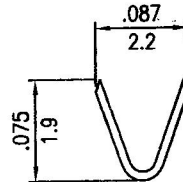
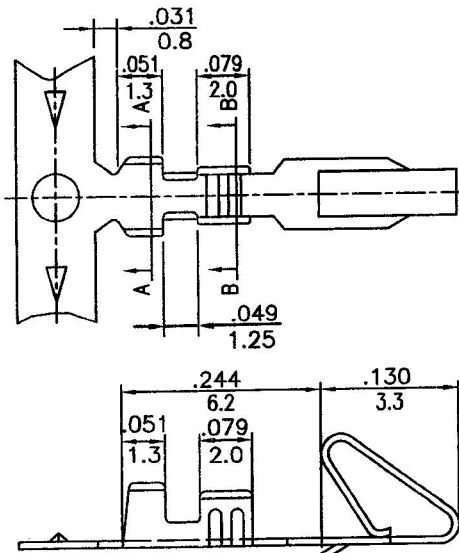
CKTS	PART NO	DIM. "A"	DIM. "B"
2	CH251Z-02	0.100(2.54)	0.222(5.65)
3	CH251Z-03	0.200(5.08)	0.322(8.19)
4	CH251Z-04	0.300(7.62)	0.422(10.73)
5	CH251Z-05	0.400(10.16)	0.522(13.27)
6	CH251Z-06	0.500(12.70)	0.622(15.81)
7	CH251Z-07	0.600(15.24)	0.722(18.35)
8	CH251Z-08	0.700(17.78)	0.822(20.89)
9	CH251Z-09	0.800(20.32)	0.922(23.43)
10	CH251Z-10	0.900(22.86)	1.022(25.97)
12	CH251Z-12	1.100(27.94)	1.222(31.05)

.100"(2.54mm) pitch crimp terminal

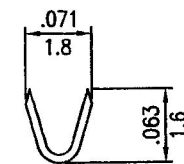
CT251 Series

- * Material:Brass
- * Finished:Tin-plated
- * Used in CH251 CH251Z series housings
- * Wire range:AWG#22~#28
- * Insulation O.D:1.50mm(max)
- * Thickness:0.2mm
- * Q'TY:10,000pcs/reel

inches
mm



A-A SECTION



B-B SECTION

