

# .098"(2.50mm) pitch Wire to Board Connectors

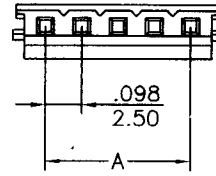


## CH2502 Series

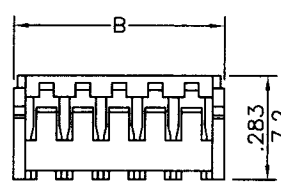
- \* Poles:2-15
- \* Material:NYLON 66 UL 94V-0
- \* Suitable CT2502T series terminal
- \* Mates with CW2502X-XX series wafer

## Specifications

- \* Current rating: 3A AC, DC
- \* Voltage rating: 250V AC, DC
- \* Temperature range: -25°C~+85°C
- \* Insulation resistance: 1,000MΩ min.
- \* Withstand voltage: 800V AC/minute



inches  
mm

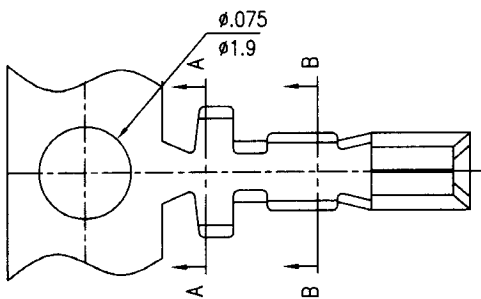


CIRCUITS	PART NO.	DIMENSION in.(mm)		CIRCUITS	PART NO.	DIMENSION in.(mm)	
		A	B			A	B
2	CH2502-02	0.098(2.50)	0.268(6.8)	9	CH2502-09	0.787(20.00)	0.957(24.3)
3	CH2502-03	0.197(5.00)	0.366(9.3)	10	CH2502-10	0.886(22.50)	1.055(26.8)
4	CH2502-04	0.295(7.50)	0.465(11.8)	11	CH2502-11	0.984(25.00)	1.154(29.3)
5	CH2502-05	0.394(10.00)	0.563(14.3)	12	CH2502-12	1.083(27.50)	1.252(31.8)
6	CH2502-06	0.492(12.50)	0.661(16.8)	13	CH2502-13	1.181(30.00)	1.350(34.3)
7	CH2502-07	0.591(15.00)	0.760(19.3)	14	CH2502-14	1.280(32.50)	1.449(36.8)
8	CH2502-08	0.689(17.50)	0.858(21.8)	15	CH2502-15	1.378(35.00)	1.547(39.3)

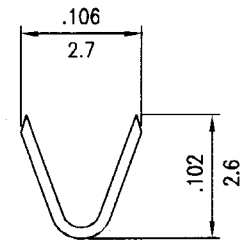
# .098"(2.50mm) pitch crimp terminal

## CT2502T Series

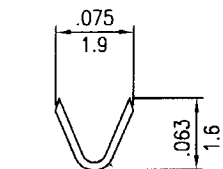
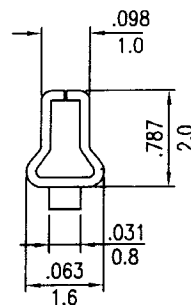
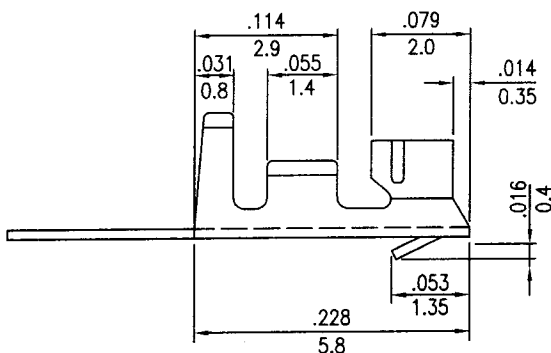
- \* Material:Phos bronze
- \* Finished:Tin-plated
- \* Used in CH2502 series housings
- \* Wire range:AWG#24~#28
- \* Insulation O.D:1.70mm(max)
- \* Thickness:0.2mm
- \* Q'TY:10,000pcs/reel



inches  
mm



A-A SECTION



B-B SECTION