

.039"(1.00mm) pitch Wire to Board Connectors

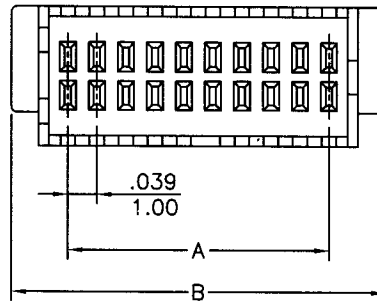


CH1002 Series

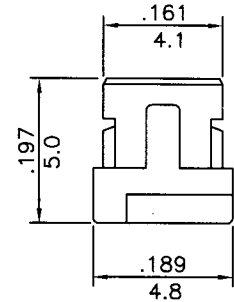
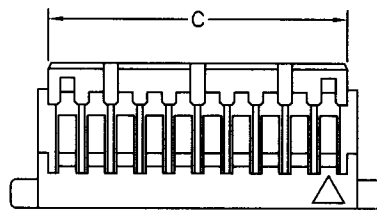
- * Poles: 20 30 40 50
- * Material: PBTP UL94V-0 White
- * Suitable CT1001T series terminal
- * Mates with CW1002X-XX series wafer

Specifications

- * Current rating: 1A AC, DC
- * Voltage rating: 50V AC, DC
- * Temperature range: -25°C~+85°C
- * Insulation resistance: 1,00MΩ min.
- * Withstand voltage: 500V AC/minute



inches
mm

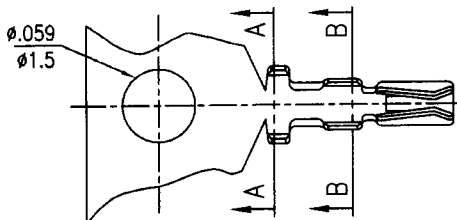


| CIRCUITS | PART NO. | DIMENSION in.(mm) | | |
|----------|-------------|-------------------|-------------|-------------|
| | | A | B | C |
| 20 | CH1002-2X10 | 0.354(9.00) | 0.512(13.0) | 0.406(10.3) |
| 30 | CH1002-2X15 | 0.551(14.00) | 0.709(18.0) | 0.602(15.3) |
| 40 | CH1002-2X20 | 0.748(19.00) | 0.906(23.0) | 0.799(20.3) |
| 50 | CH1002-2X25 | 0.945(24.00) | 1.102(28.0) | 0.996(25.3) |

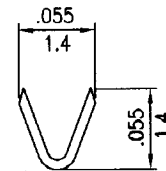
.039"(1.00mm) pitch crimp terminal

CT1001T Series

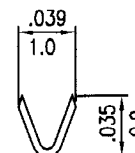
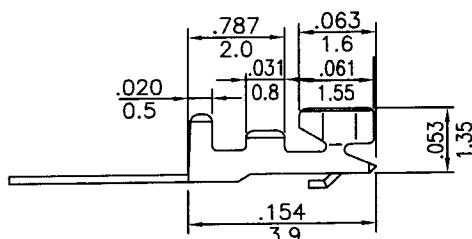
- * Material: Phos bronze
- * Finished: Tin-plated
- * Used in CH1001, CH1002 series housings
- * Wire range: AWG#28~#32
- * Insulation O.D: 0.8mm(max)
- * Thickness: 0.12mm
- * Q'TY: 15,000pcs/reel



inches
mm



A-A SECTION



B-B SECTION